

FEBRUARY
18-20, 2022



VENDOR INFO BOOKLET 2022



Laramie County Events
3801 Archer Parkway
Cheyenne, WY 82009
(307) 633-4670
laramiecountyevents.com



SHOW INFO

Load In:

Bulk - Wednesday, February 16

Booths - Thursday February 17



Show Times:

Friday, February 18 (1pm-7pm)

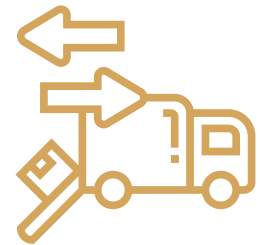
Saturday, February 19 (9am-4pm)

Sunday, February 20 (9am-2pm)

Load Out:

Booths - Sunday, February 21

Bulk - Monday February 22



Any questions, comments, or concerns?
Contact us at:

Office - (307) 633-4670

farmandranchshow@laramiecounty.com

ABOUT US

The Laramie County Events Department manages all event facilities at the Archer Recreation Complex, including the Event Center at Archer, Archer Rodeo Arenas, Laramie County Motorsports Park, and the Laramie County Fairgrounds. Laramie County Events also hosts the annual Laramie County Fair.



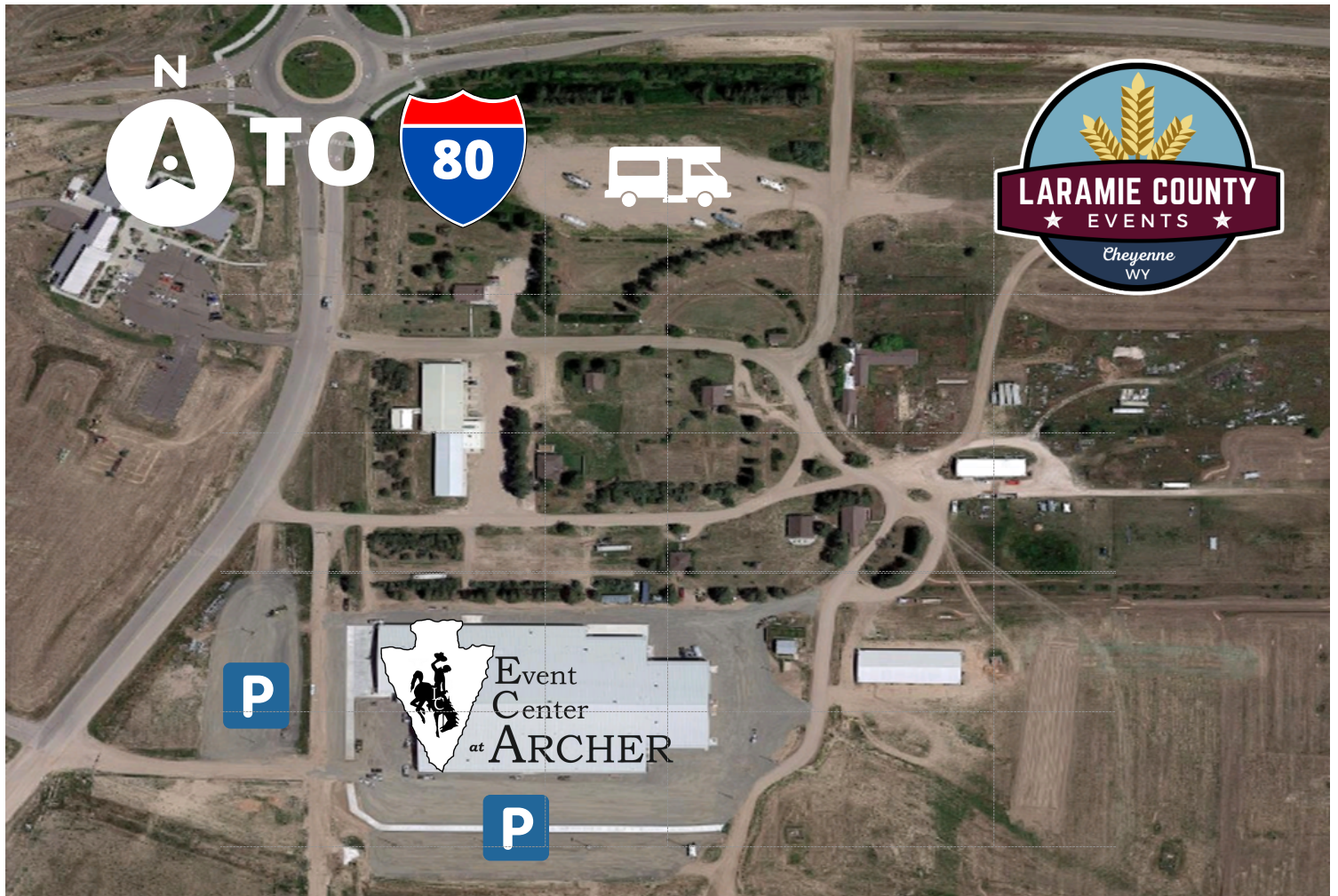
EVENT CENTER AT ARCHER

The new Event Center at Archer is Laramie County's new multi-purpose event facility. The venue features a finished concrete event floor of 49,000sqft, with an additional 15,000sqft Prefunction area perfectly suited for vendor displays or registration tables.



GROUNDS MAP

The Event Center at Archer is conveniently located off of I-80 on Exit 370. Being less than 10 miles from the I-25 intersection as well. The facilities also include an RV park and multiple event venues.



For those with bulk items or equipment. The building is equipped with 2 - 14' roll-up doors and multiple 10' roll-up doors. Parking for trailers will be available in the south lot of the Event Center.



EXHIBITOR INFO

2022 EXHIBITOR BOOTH PRICING

Booth Pricing	Size	Early Bird Rate (Book by 01-31-2022)	Standard Rate (After 02-01-2022)
<u>Standard Booth</u>			
Single	10' x 10'	\$200.00	\$300.00
Double	10' x 20'	\$375.00	\$475.00
Triple	10' x 30'	\$550.00	\$650.00
<u>Bulk Space</u>			
Oversize Bulk Space	30' x 50' minimum	\$1.25/sq. ft.	\$1.50/sq. ft.
◆ Each Booth comes with pipe & drape on the back and sides, (1) 8' table, and (2) chairs			

ADDITIONAL INFORMATION

- Exterior garage doors used for load-in/out measure 14ft. wide by 14ft. tall.
- Booths must remain intact until the show closes
- Concessions will be available during the event
- We will have educational sessions going on during the event. If you or your business would like to get involved, please let contact us for available time slots and content.
- This event is free to the public



LARAMIE COUNTY
**FARM
& RANCH
SHOW**



Laramie County Events
3801 Archer Parkway
Cheyenne, WY 82009
(307) 633-4670
laramiecountyevents.com

